



**Spring 2009**  
**Washington State Migrant Education**  
**Secondary Education for Migrant Youth (SEMY)**

# **PASS PROGRAM**

# **BREAKING NEWS**

## **Graduating Seniors – Deadline for Spring Credit**

**Enroll spring graduating seniors before May 15th!** Work with counselors and teachers to ensure enrollments for spring graduating seniors are processed *now!* Enrollments for Spring graduating seniors will not be accepted on and after May 16. To allow time for grading, written assignments as part of unit tests must be submitted to SEMY immediately upon completion of the test.

While awaiting formal transcripts, provide a copy of the Student Grade Report to the registrar. In most cases, this will be sufficient documentation to allow the student to participate in commencement ceremonies. Parents may be particularly helpful in monitoring student progress this spring. SEMY staff refer calls from students and their family members to the student's PASS Contact Person.

## **Monitoring Progress**

Migrant students are actively enrolled in more than 600 PASS courses as winter officially ends and spring begins. Help your enrolled students overcome spring fever! Monitor course progress closely in March, April and May to support achievement of the State PASS Standards: minimum 70% completion rate and average grade. On average, students need to complete a unit every three weeks to finish a full course within the enrollment period. Scheduling unit tests in advance gives students needed milestone goals. Help students who will not finish by the end of spring semester to transfer into summer school (see back for tips) so they complete all enrolled units.

## **Exciting New Courses Released**

The PASS curriculum offers new courses this year that may help your migrant students make up credit deficiencies. Which of your migrant students could benefit from these?

**Biology A** (*the second semester course is coming soon!*)

**Environmental Science A and B** (*meets CADRs university admission requirements*)

**Civic Involvement** (*satisfies the 11<sup>th</sup>-12<sup>th</sup> grade Social Studies CBA requirement*)

**Preparing for College** (*unique one unit overview, including test taking strategies*)

**World Geography** (*EALR and GLE aligned*)

**World History A** (*the second semester course is coming soon!*)

## **Test Retakes**

Students who are well prepared to test earn good grades and are motivated to continue in the course. In the rare instance when a retake test is needed, the student must revisit his/her workbook and text. The mentor should check the student's workbook using answers in the Mentor Manual, and work with the student on study skills and a review of content.

## **What's Ahead?**

**Scoring for PASS unit tests with written assignments:** Beginning Fall 2009, the unit score will be based 40% on the written assignment, and 60% on the online test. Students will receive points for following assignment instructions. To do so, students need your help. Always print the directions for these assignments from the database testing page in advance of the test. The student must possess these directions while completing the written assignment during the single proctored testing session. Students are **ONLY** permitted to work on the assignment outside the testing session when that fact is specified in the Testing Notes for the unit.

**See reverse for information on summer program preparation.**

# Migrant Education – Harvest of Hope



## Spring Into Action by Scheduling 2009 Summer PASS Students Now

A successful strategy for **increasing your summer completion rate** is to begin PASS courses in the spring, so students have experienced success in the course and are motivated to continue in summer. Coordination between the summer school teacher and the regular school year PASS Contact Person is strongly encouraged.

To reach credit deficient migrant students, choose a summer schedule that does not compete with their need to work to help support their families. Recruit summer school students through their families in spring. Informing parents of their students' credit accrual needs to graduate on time is helpful.

Scheduling a motivational activity the first day of summer school, and challenging students to demonstrate their commitment by returning the second day before you enroll in PASS will minimize "no show" drops.

## Summer Commitment

Summer is an excellent time to help the credit deficient migrant student catch up. There are obstacles in serving the high school student during summer, as he/she is faced with a summer employment schedule, transportation needs, babysitting and other family obligations. Make sure these obstacles are thoroughly discussed prior to enrolling the student in a PASS course during the summer.

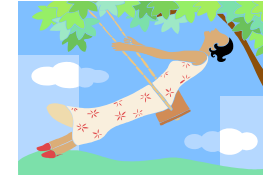
**New!** If something comes up, and the student is not able to commit to the summer course in which he/she is enrolled, call Shirley at the PASS Help Desk to discuss a withdrawal from the course and a return of course materials to SEMY.

## Helping You Succeed

Training for new PASS program developers serving migrant students is available at no cost. Just call 1-888-727-7123 to schedule.

PASS reference materials can be printed directly from [www.semy.org](http://www.semy.org).

A SEMY Program Facilitator may visit your summer classroom by appointment to learn about and share motivational strategies proven effective in other schools and districts.



## Summer Tips

We encourage you to enroll the summer PASS student in only the number of units he/she will most likely be able to complete.

Some experiments in the PASS science courses require access to a laboratory. A few require more than one class period to complete. You may wish to defer enrollment in these PASS courses until the regular school year begins.

In the final week of summer school, ask students where they will enroll in Fall. If the student will remain in your district, transfer course materials to the PASS Contact Person for the regular school year.

If the student will enroll in a different district, complete PASS Form C to drop the student and ship the completed Form C with unused course materials to SEMY. We'll help to ensure that your student has the opportunity to continue work on the course from his/her new location.

Online PASS enrollment gets course materials into your hands quickly. If summer shipments will not come to your building, ask mail room staff to call when packages from SEMY arrive for you.

You may request that transcripts be held through the summer and mailed to your registrar at the beginning of the regular school year.